

ALLDAY
& MILLER



Wentworth Crescent, Hayes, UB3 1NP
£535,000

 3  1  1  D



Wentworth Crescent, Hayes, UB3 1NP

£535,000

- Three Bedrooms
- Semi-Detached House
- Driveway
- Close To Hayes Town Centre
- Walking Distance To An Elizabeth Line Station
- Freehold
- Great Potential To Extend STPP
- Chain Free
- Good Schools Nearby
- M4 + M25 Motorways Within Easy Reach

Description

Nestled in the heart of South Hayes this bay fronted three bedroom semi-detached home with ample of potential to extend further. Offered to the market with NO ONWARD CHAIN.

This bay fronted semi-detached family home brought to the market comprises of a welcoming entrance, spacious light filled reception room, a dining room and a traditional fitted kitchen which gives access to the large rear garden.

The first floor enjoys three bedrooms and a family bathroom with separate WC.

A front driveway space for off street parking. To the rear is a private garden mainly laid to lawn with two outbuilding stores.

Situation

Wentworth Crescent a quiet and popular residential road situated in Hayes moments from the Town Centre with its variety of shops, cafes, take aways and restaurants. Hayes & Harlington station being just a 10 minute walk, with the Elizabeth Line Station providing a fast journey into Central London. The M4 + M25 motorways, Heathrow Airport, and Stockley Park also within a close proximity. Added benefit of a number of highly regarded schools in the local area including Harlington Community School and Pinkwell Primary school.

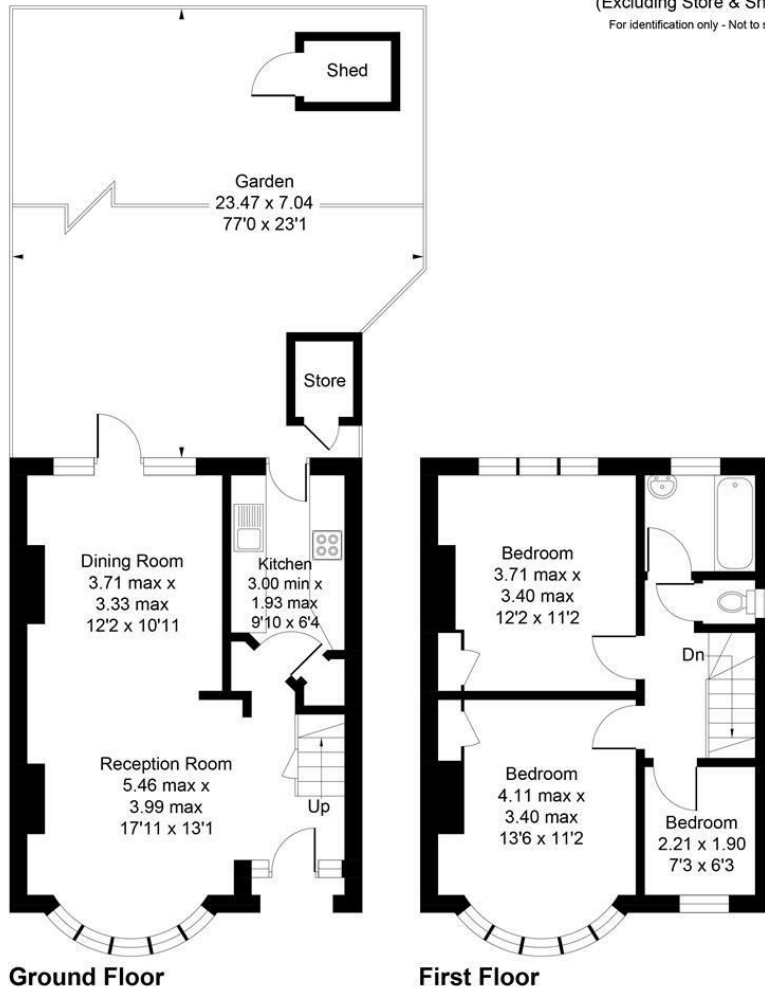


Floor Plans

Wentworth Crescent, Hayes, UB3

Approximate Area = 868 sq ft / 80.6 sq m
(Excluding Store & Shed)

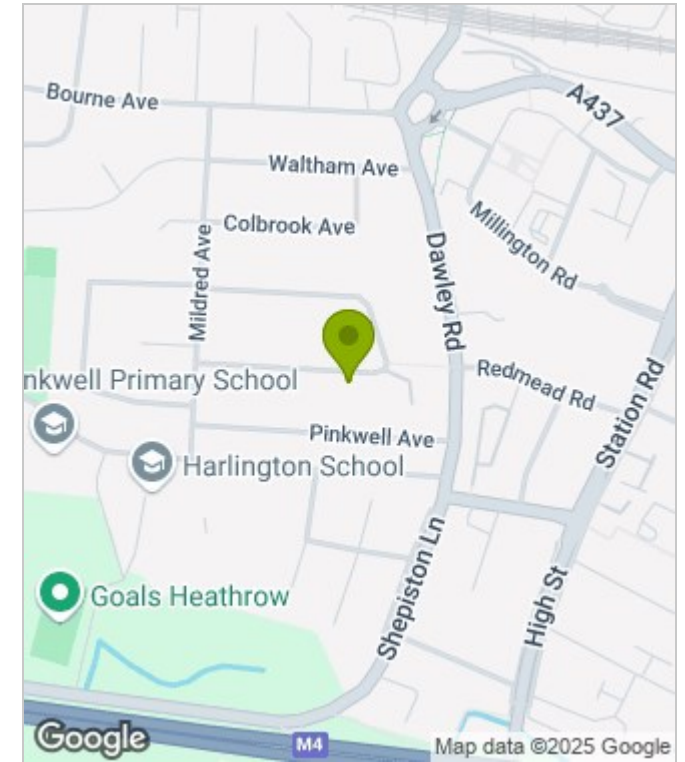
For identification only - Not to scale



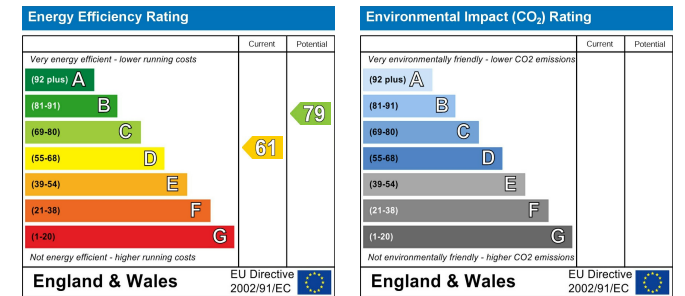
Floor plan produced in accordance with RICS Property Measurement Standards incorporating International Property Measurement Standards (IPMS2 Residential). ©Vizion Property Marketing 2024. Produced for Allday & Miller.

ALLDAY & MILLER
estate agents

Area Map



Energy Performance Graph



These particulars, whilst believed to be accurate are set out as a general outline only for guidance and do not constitute any part of an offer or contract. Intending purchasers should not rely on them as statements of representation of fact, but must satisfy themselves by inspection or otherwise as to their accuracy. No person in this firm's employment has the authority to make or give any representation or warranty in respect of the property.